



Art.Nr. 989181_02_EN/01.2020









Aluminium systems

turn/tilt stay – AvanTec fittings

en

Installation instructions for qualified personnel

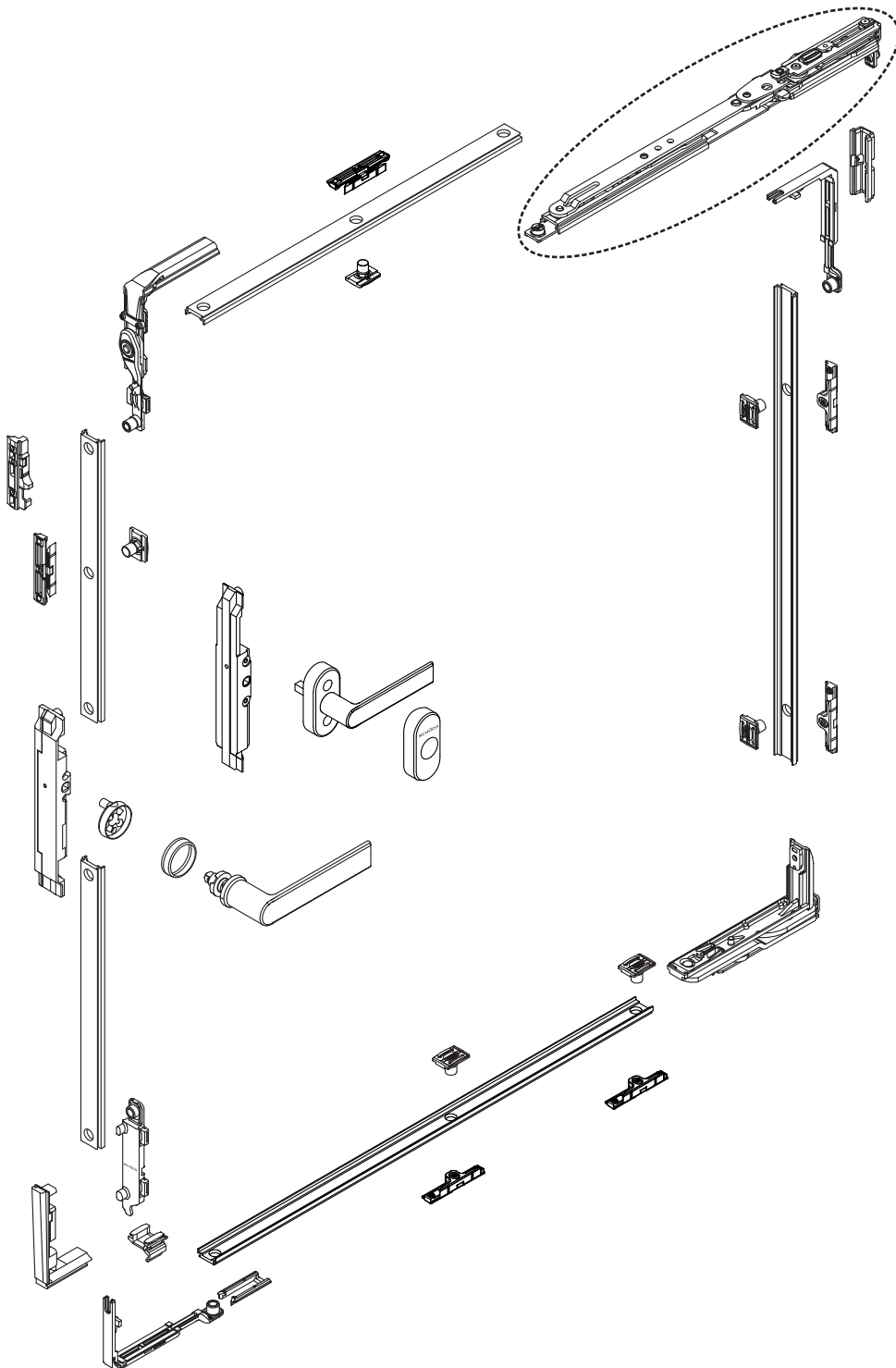
Overview of Schüco tools

Schüco ISR 15/20 				
	283 687	Screwdriver	Shaft 100 mm	1
	283 689	Angled screwdriver	Shaft 55 mm	1
	283 688	Screwdriver with T-handle		1
	283 693	Screwdriver with T-handle and flexible shaft, with bit holder		1
	289 097	Pistol-style screwdriver with ratchet function, LED light and bit storage com- partment Handle can be swivelled to 60°		1
	283 692	Bit insert	Bit length 110 mm	1
	289 098	Flexible shaft with bit holder Can be combined with pistol-style screwdriver		1

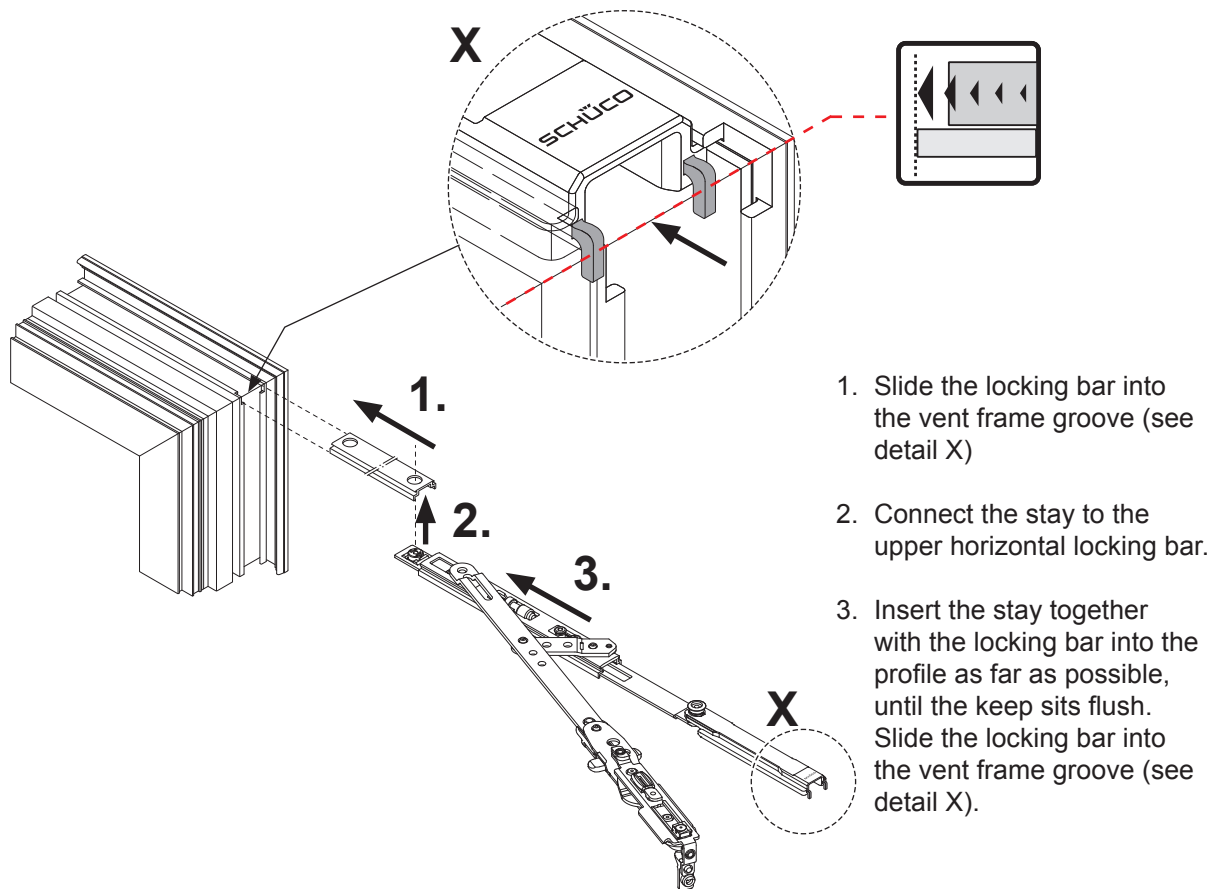
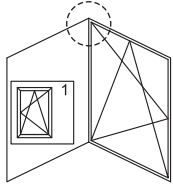
1. Turn/tilt stay – AvanTec fittings

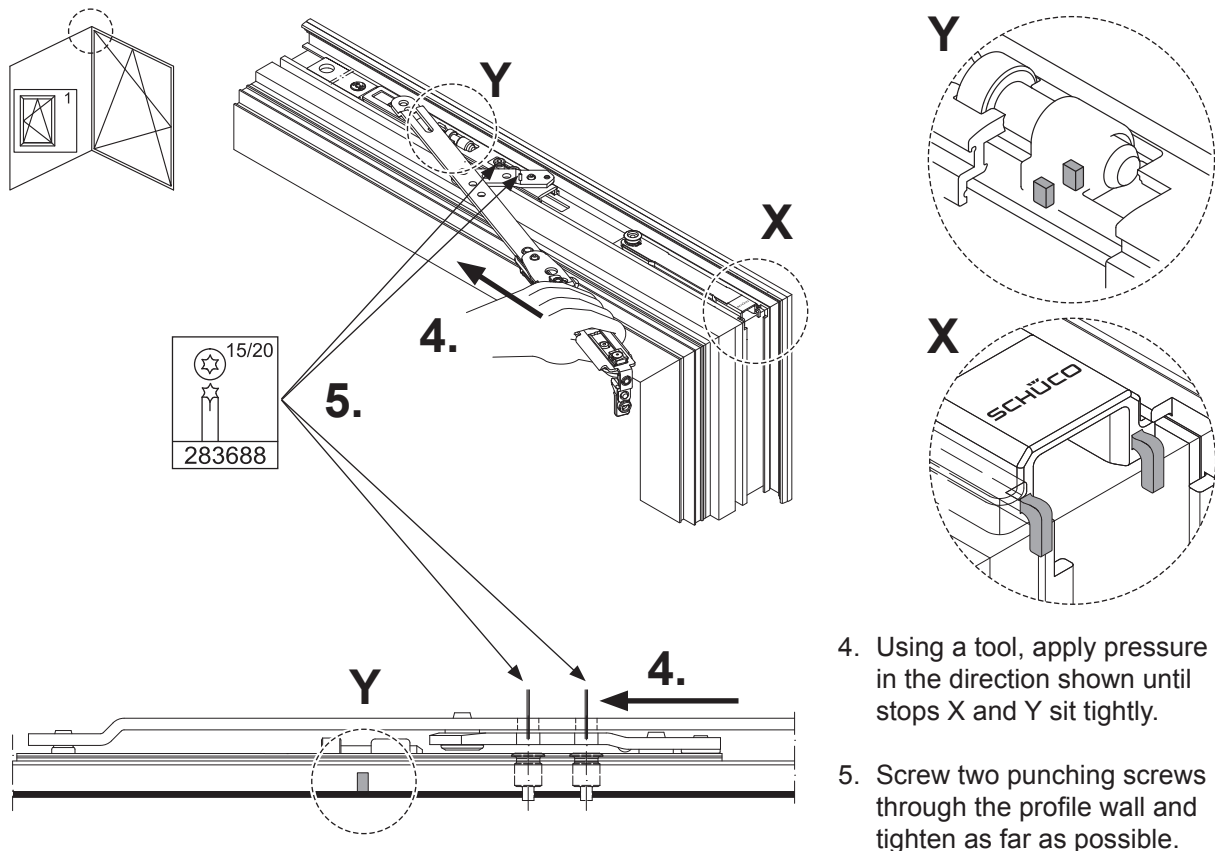
1.1 Overview of AvanTec fittings

Turn/tilt stay	Left (left-hand side)	Right (right-hand side)
60 kg	275 011	275 012
130 kg	275 013	275 014
160 kg	275 313	275 314



2. Installing turn/tilt stay with AvanTec fittings

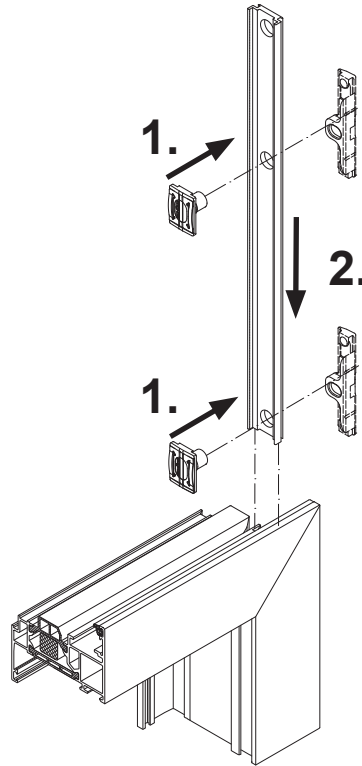
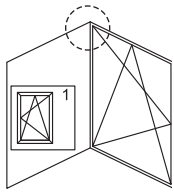




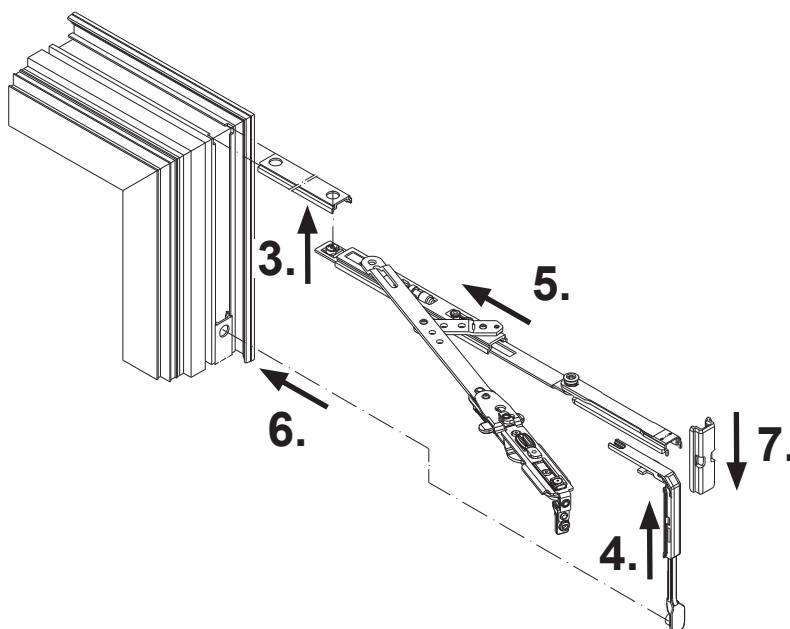
4. Using a tool, apply pressure in the direction shown until stops X and Y sit tightly.
5. Screw two punching screws through the profile wall and tighten as far as possible.

<p>NOTE</p>	<p>If the stay is installed as part of a repair, the punching screws must re-inserted into the existing punched holes.</p> <ol style="list-style-type: none"> 1. Remove one of the two punching screws from the locating stop. 2. Centre the position of the locating stop with the hole of the removed screw. 3. Secure with the second punching screw. 4. Screw in both punching screws as far as possible.

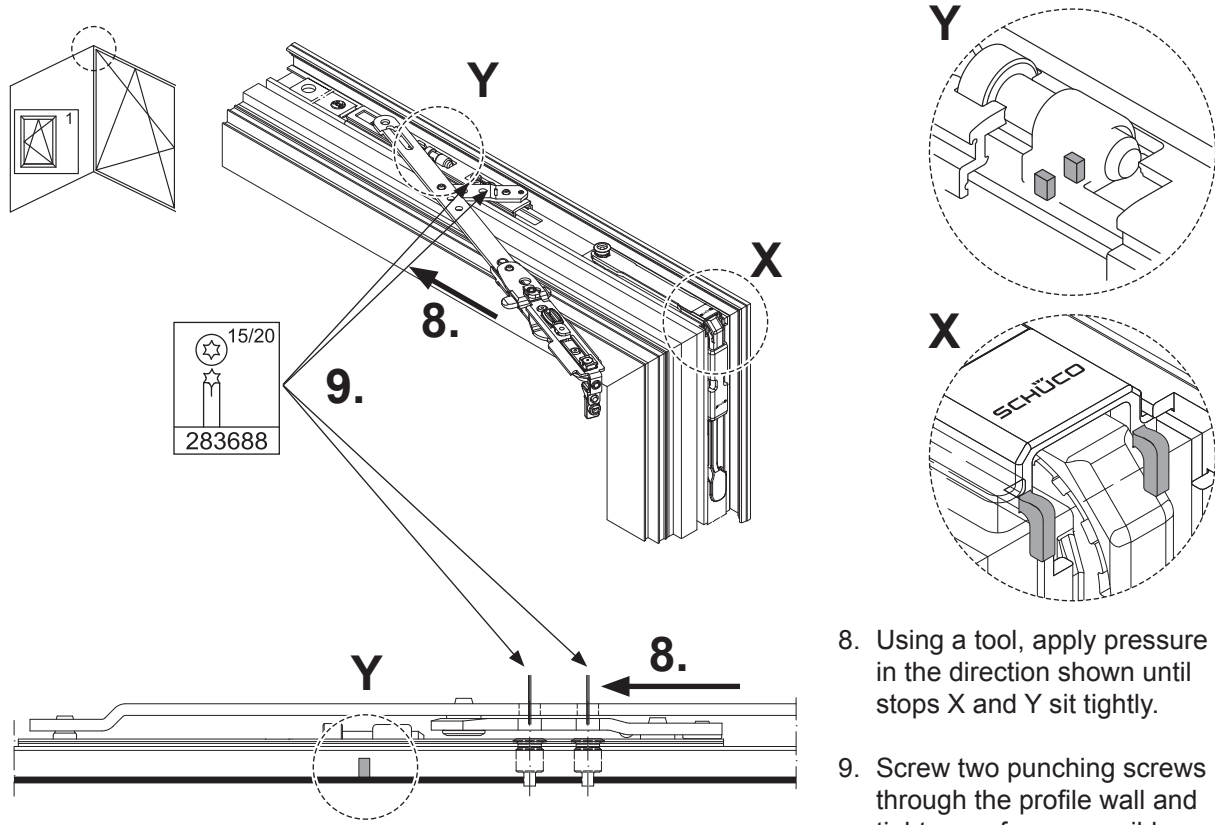
2.1 Alternative: stay with vertical corner drive



1. Insert the locking rollers into the locking bar.
2. Push the locking bar into the locking bar groove at the top on the hinge side.



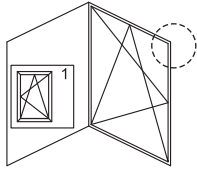
3. Connect the stay to the upper locking bar.
4. Place the corner drive in the keep.
5. Insert the stay into the profile as far as possible, until the keep sits flush.
6. Connect the corner drive to the hinge-side locking bar.
7. Fix the corner drive with the plastic clip.



- 8. Using a tool, apply pressure in the direction shown until stops X and Y sit tightly.
- 9. Screw two punching screws through the profile wall and tighten as far as possible.

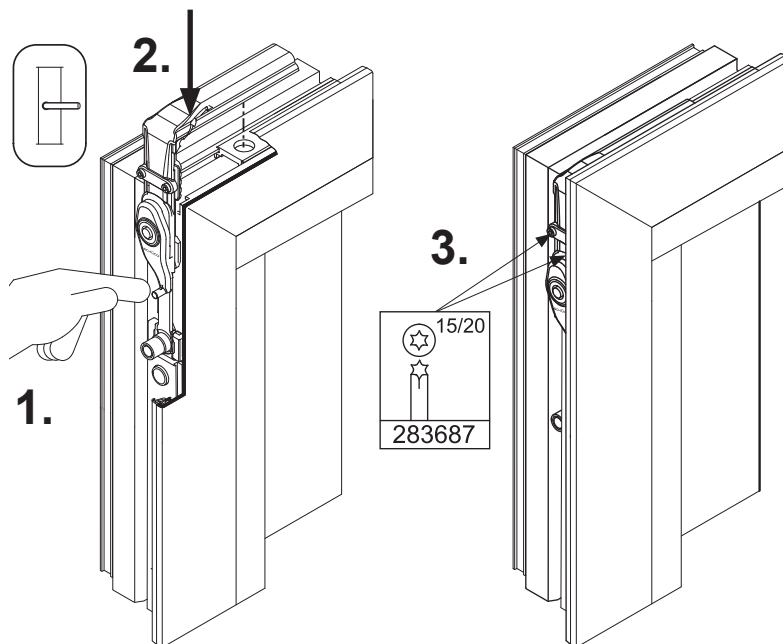
<p>NOTE</p>	<p>If the stay is installed as part of a repair, the punching screws must re-inserted into the existing punched holes.</p>
	<p>1. Remove one of the two punching screws from the locating stop.</p>
	<p>2. Centre the position of the locating stop with the hole of the removed screw.</p>
	<p>3. Secure with the second punching screw.</p>
	<p>4. Screw in both punching screws as far as possible.</p>

2.2 Installation: handle-side corner drive with stop

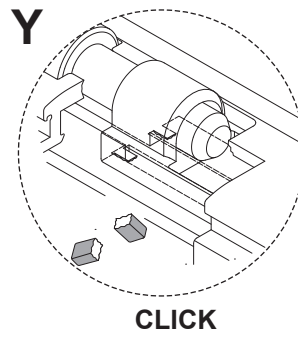
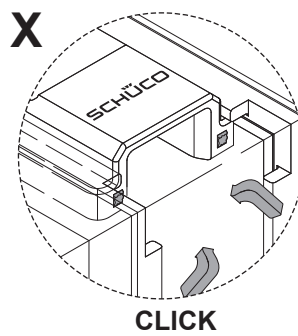
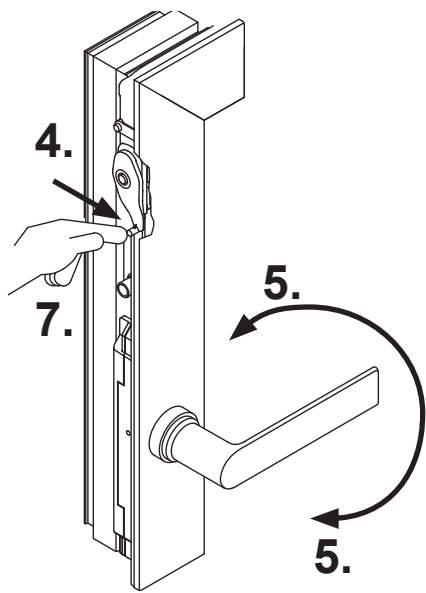
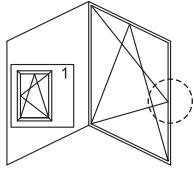


INFORMATION

See also the installation instructions for the corner drive with stop.

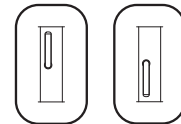


1. Insert the handle-side corner drive with stop in the upper horizontal locking bar.
2. Insert the locking bar in the profile.
3. Screw in both grub screws.
4. Operate the anti-mishandling device of the corner drive.

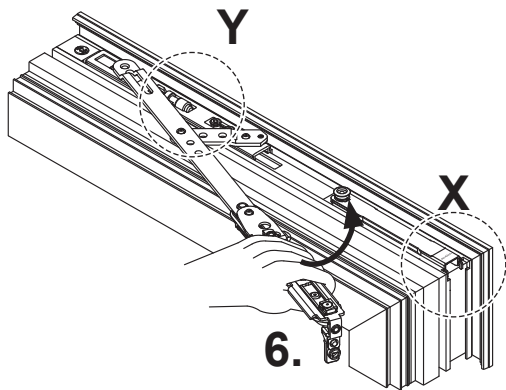


5. Turn the handle through the tilt and closure positions until the spacers (see X, Y) break off.

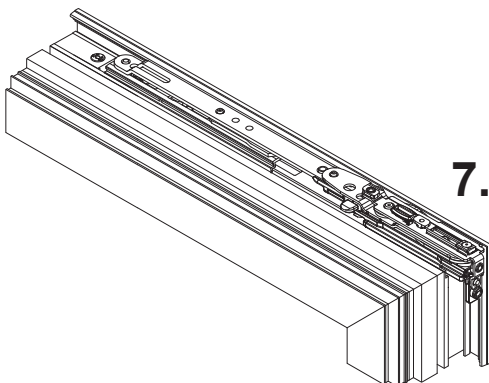
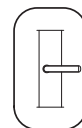
6. Insert the stay in the keep.



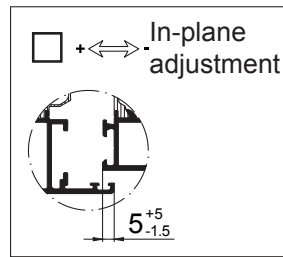
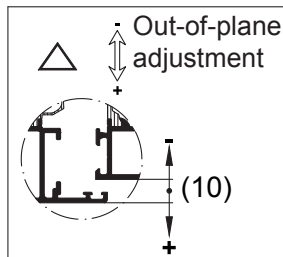
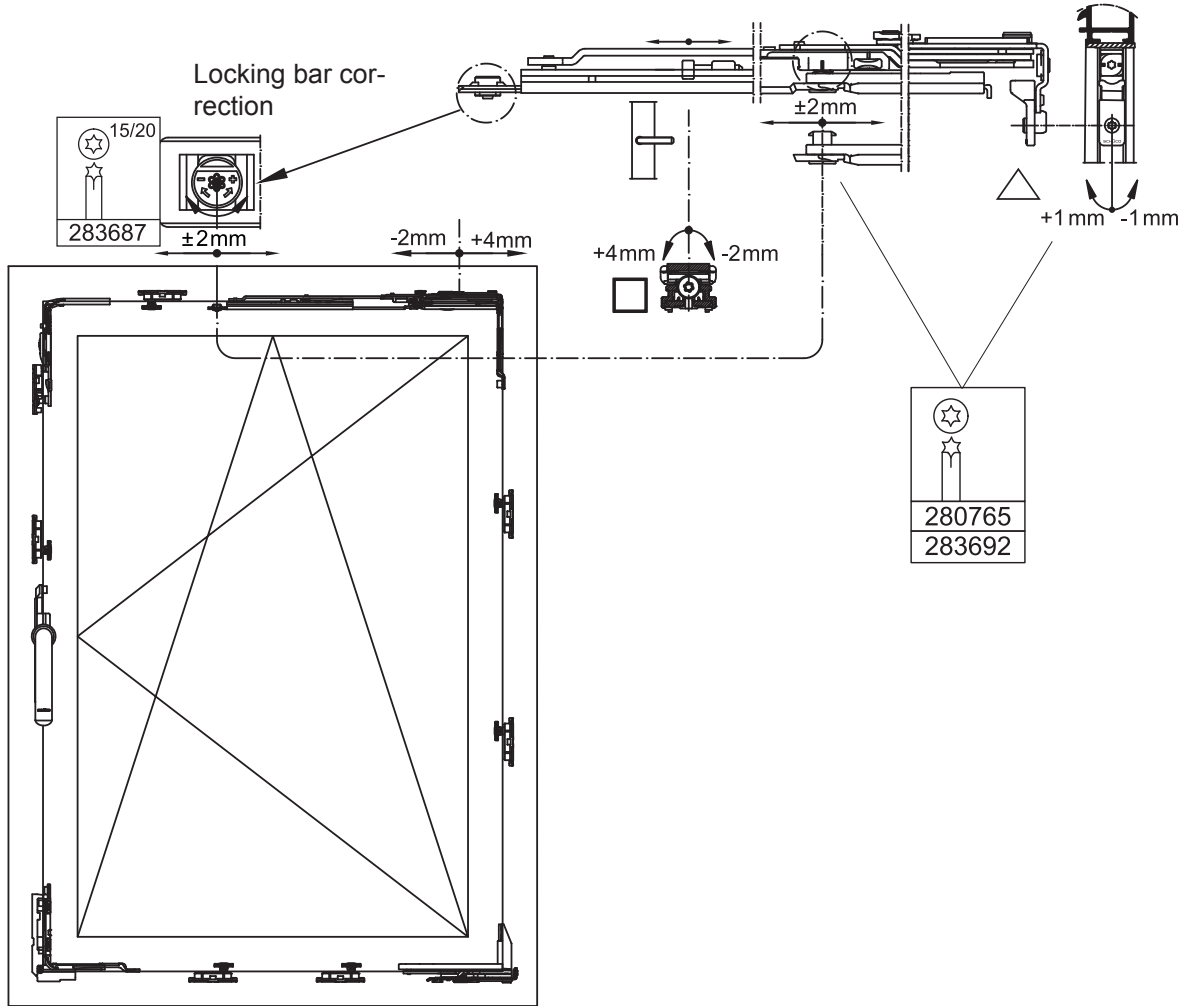
5.



7. Bring the handle into the turn position while operating the anti-mishandling device.



3. Adjustment options for the turn/tilt stay



Make out-of-plane and in-plane adjustments to the vent as required..

4. Removing AvanTec turn/tilt stays



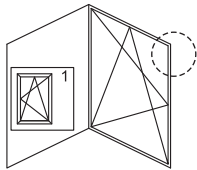
DANGER

The replacement and adjustment of fittings components must only be carried out by qualified personnel.

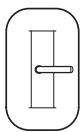
To remove the stay, the window vent must first be uninstalled.

Depending on the size and weight of the window, 1-3 people are needed for the removal.

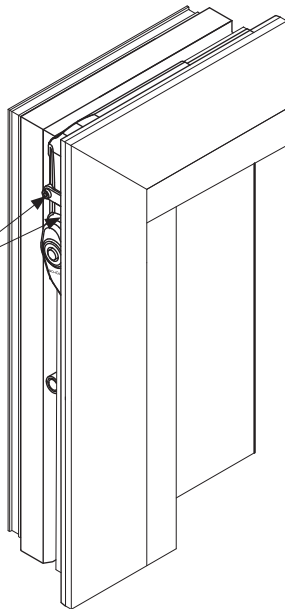
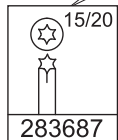
When doing so, follow the safety instructions in the Schüco turn/tilt vent installation instructions for AvanTec fittings.



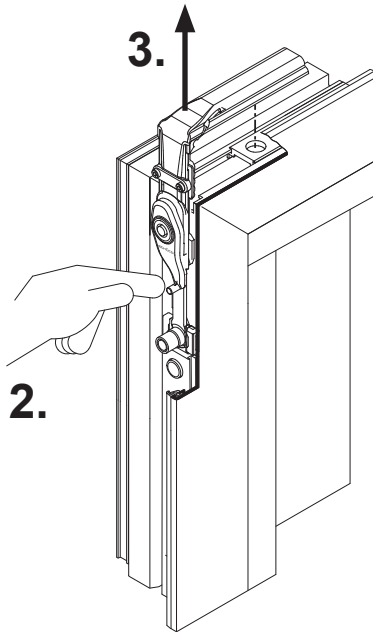
Before the AvanTec turn/tilt stay can be removed, the upper corner drive with stop on the handle side must be loosened.



1.



2.



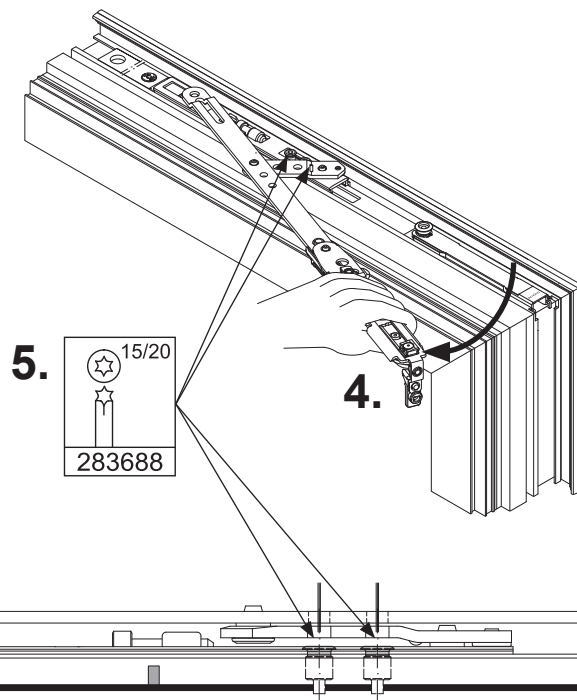
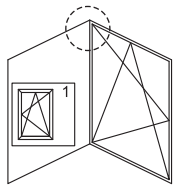
3.

1. Loosen both grub screws.
2. Operate the anti-mishandling device.
3. Remove the corner drive from the upper horizontal locking bar.

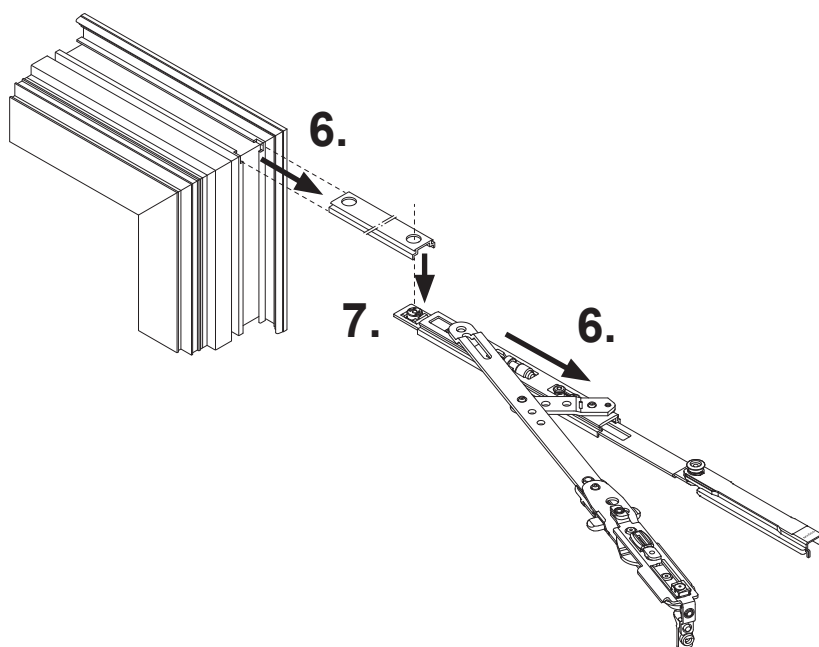


INFORMATION

See also the installation instructions for the corner drive with stop.

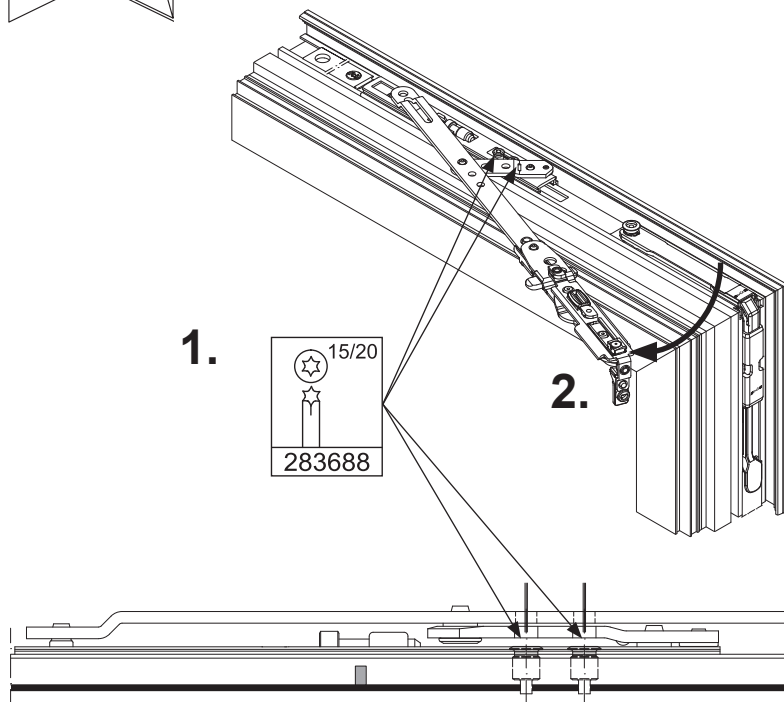
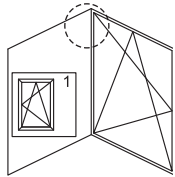


4. Pivot out the long arm until it noticeably engages.
5. Loosen the two punching screws.

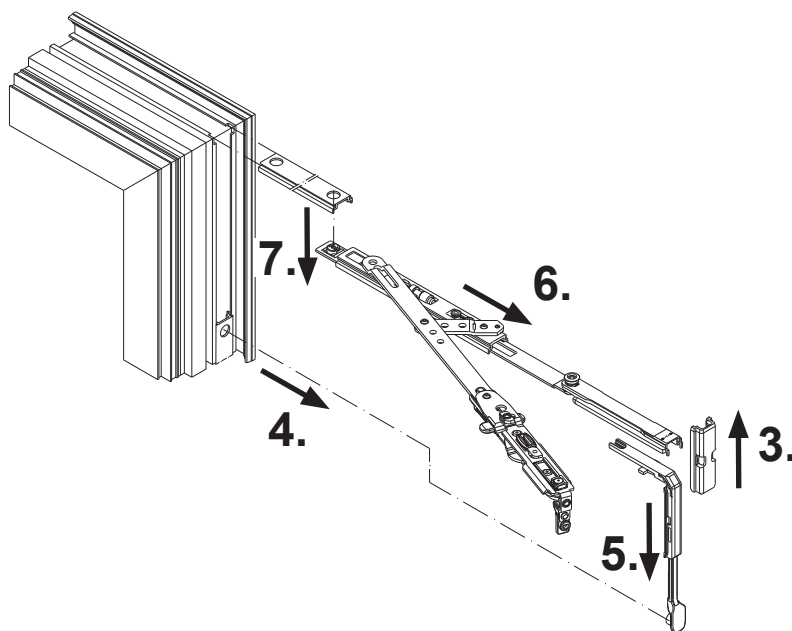


6. Pull the stay and locking bar out of the vent frame.
7. Disconnect the stay from the locking bar.

4.1 Alternative: stay with vertical corner drive



1. Pivot out the long arm until it noticeably engages.
2. Loosen the two punching screws.



3. Remove the plastic clip.
4. Disconnect the corner drive and the hinge-side locking bar.
5. Pull the corner drive out of the keep.
6. Pull the stay out of the profile.
7. Disconnect the stay and upper locking bar.

en Original instructions

The export, fabrication and assembling of Schüco products within the scope of building projects in the USA are subject to specific regulations (product testing/certification) which must be coordinated with Schüco USA LLLP prior to importing the products into the USA. If you have any questions on this matter, please contact Schüco USA LLLP, e-mail: alutechsupport@schuco-usa.com.

Schüco International KG assumes no liability for damages which result from the use / fabrication / assembling of products which have not been approved by Schüco for the US market or which are fabricated and assembled there by contractors who are not sufficiently qualified to work with Schüco products.

Schüco International KG
Karolinenstraße 1-15
33609 Bielefeld
Tel. +49 521 783-0
Fax +49 521 783-451
www.schueco.com

The "Schüco" logo and other logos are protected in Germany and various international markets. Detailed information is available upon request.

Art.Nr. 98181/EN/01.2020/Printed in Germany
We reserve the right to make changes and to correct errors.
Products may differ from illustrations.